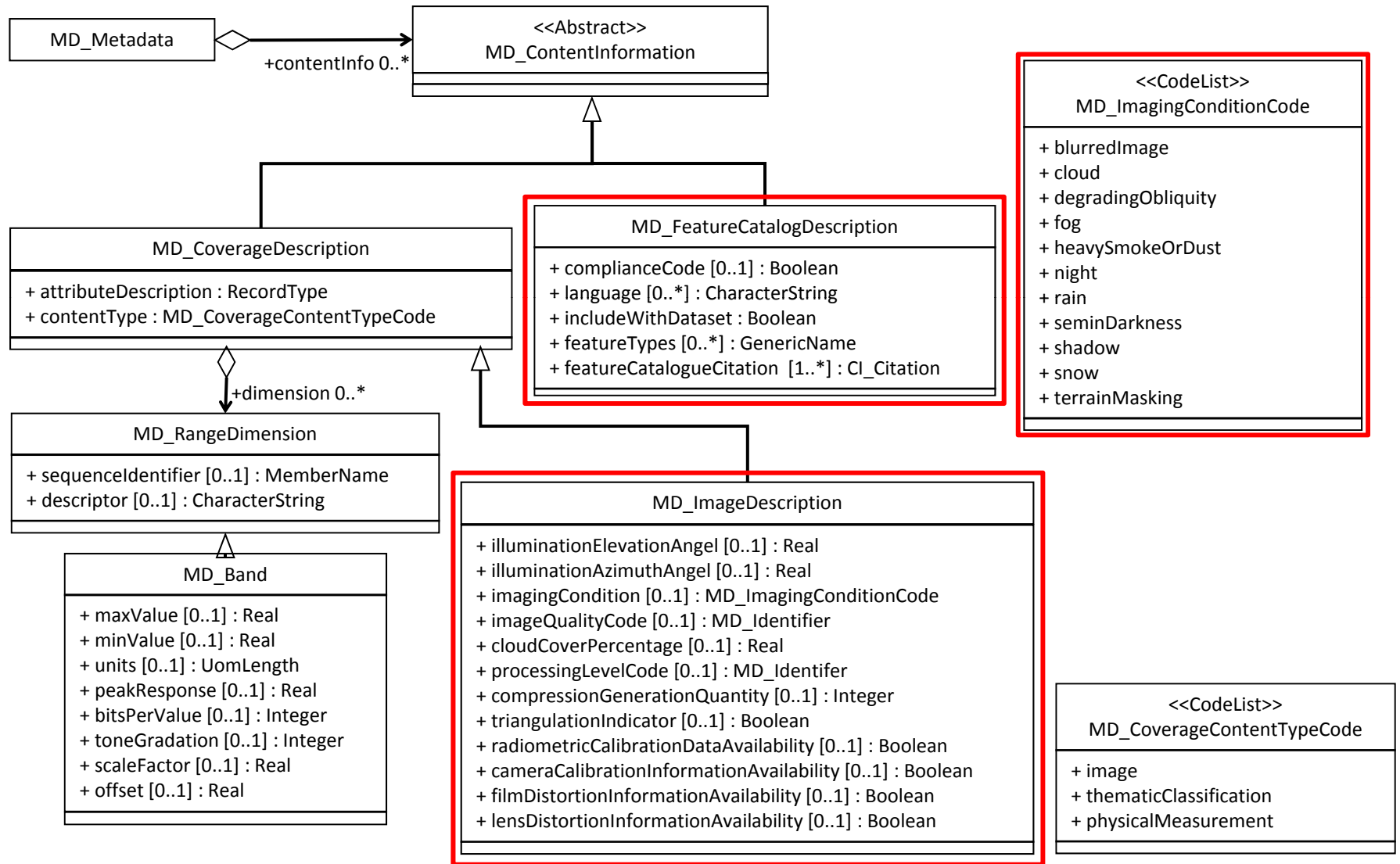
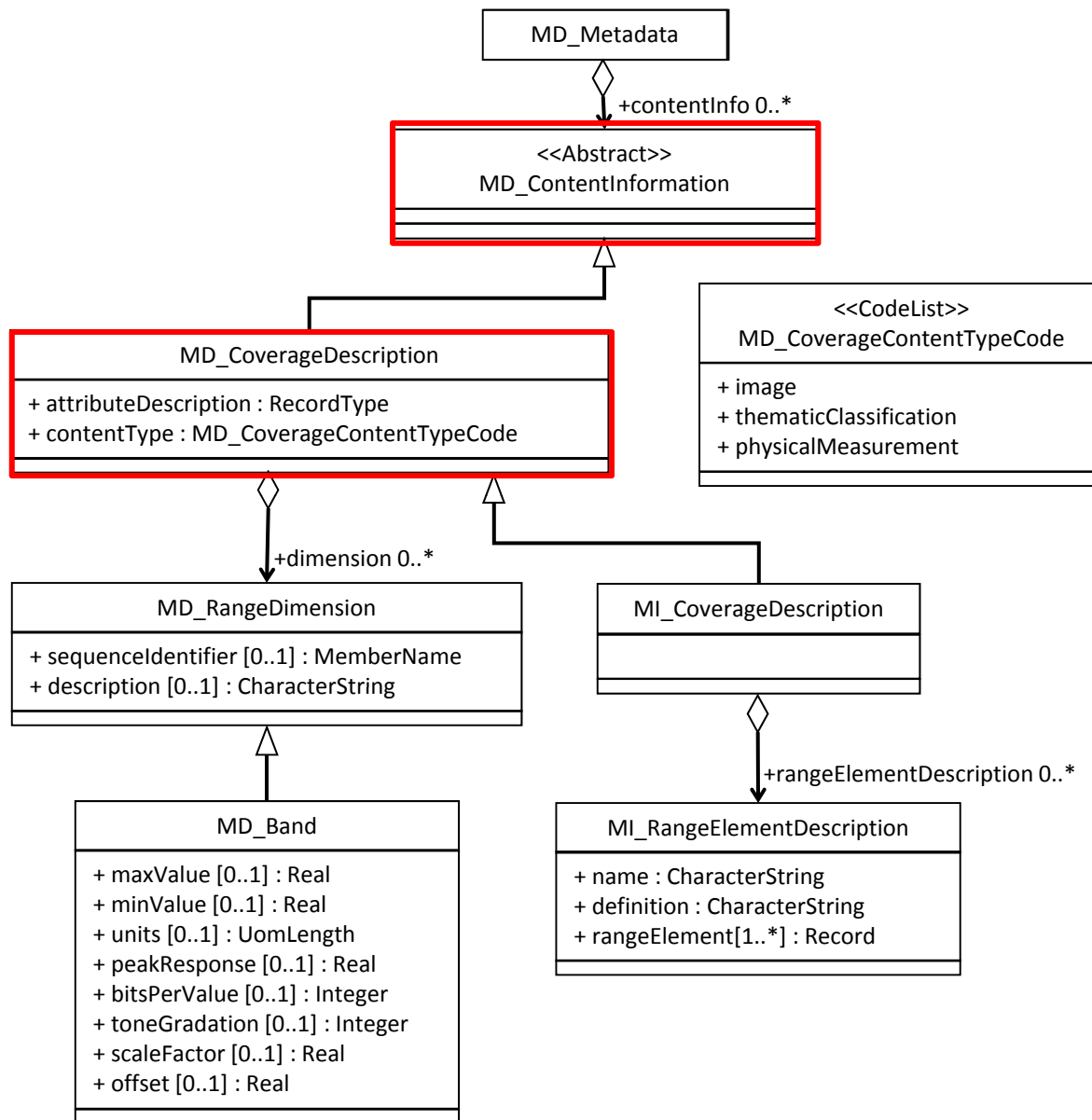


# Describing Coverages Using ISO 19115-2

Ted Habermann, NOAA National Data Centers

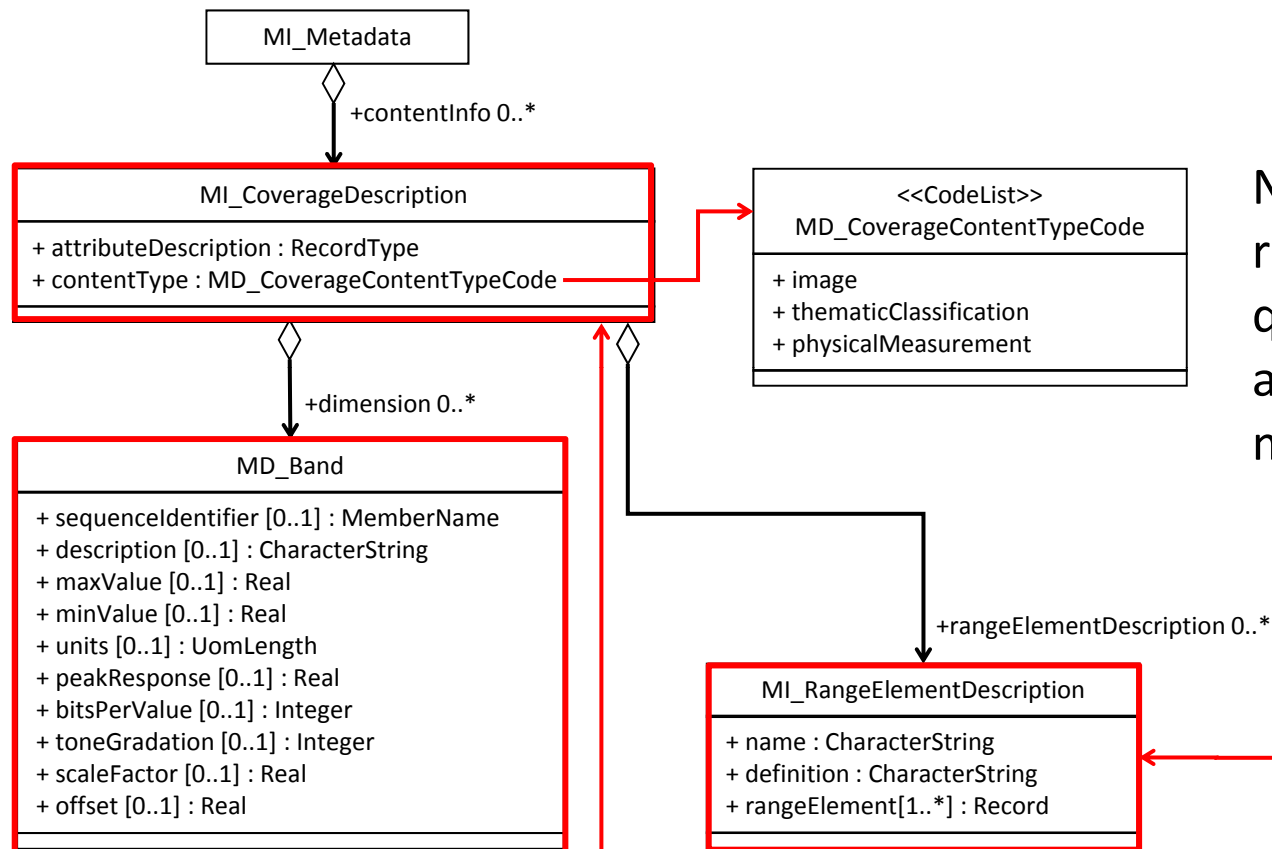
# MD\_ContentInformation





MI\_ContentInformation 19115-2 (Grid Coverages)

# MI\_CoverageDescriptions

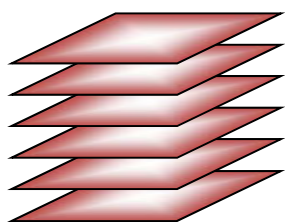


New Types:  
referenceInformation  
qualityInformation  
auxilliaryData  
modelResult

Flags

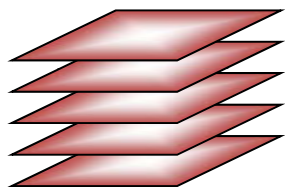
Attribute Description / Type  
Layers, Member = Unique Identifier

# Simple multi-layered dataset (SST50)



## Physical Measurements:

Analysis Temperature (sea\_surface\_temperature)      contentInfo 1  
Gradient X+, X-, Y+, Y-, Average  
Ice Field

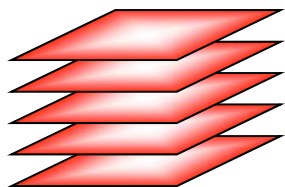


## Auxilliary Data:

Physiographic Desc. (land\_binary\_mask)      contentInfo 2  
Spatial Covariance X+, X-, Y+, Y-      contentInfo3

## Quality Reports:

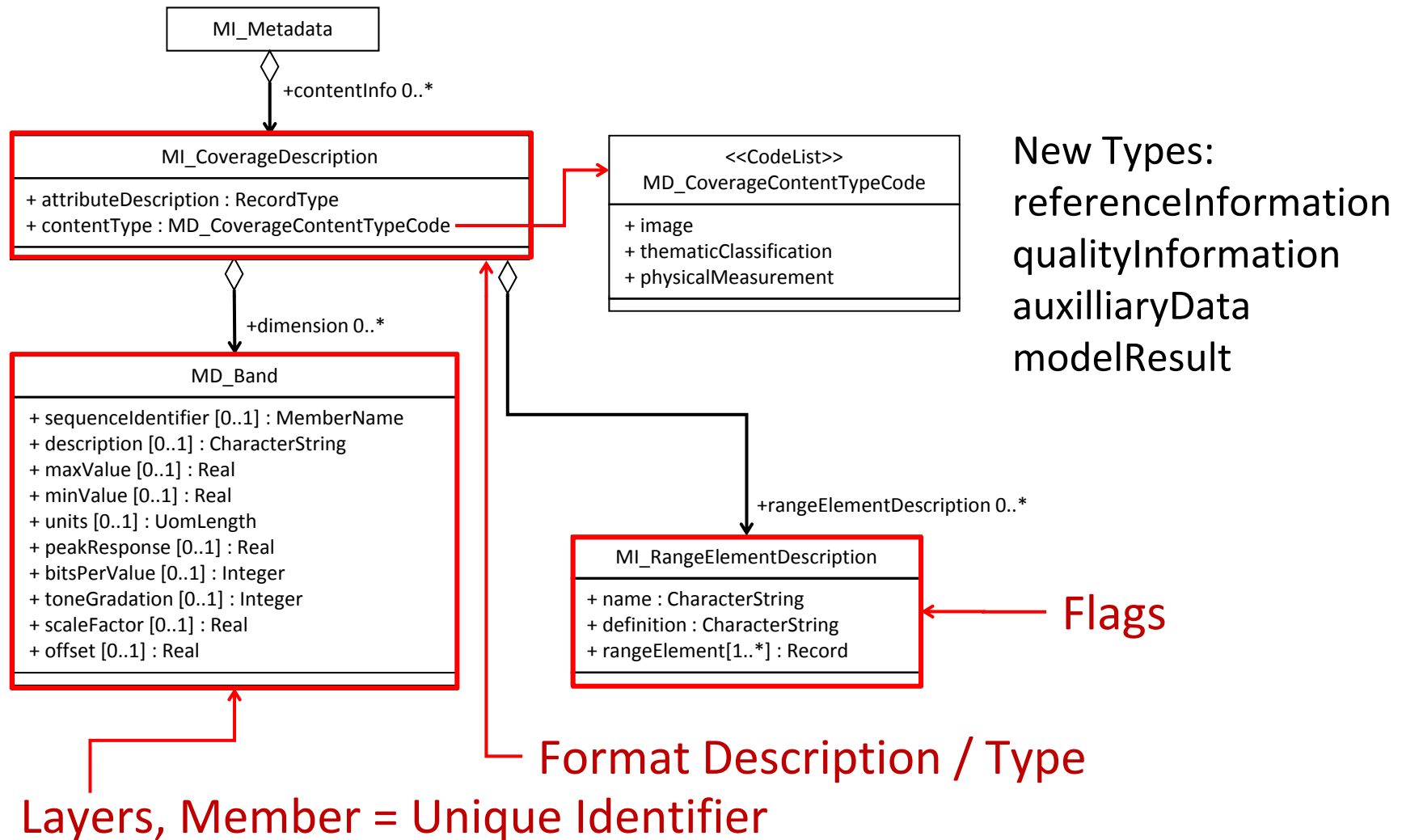
Lineage / Processing      dataQuality 1  
Processing Parameters 1      dataQuality 2  
Processing Parameters 2      dataQuality 3  
Mission History      dataQuality 4



## Quality Information:

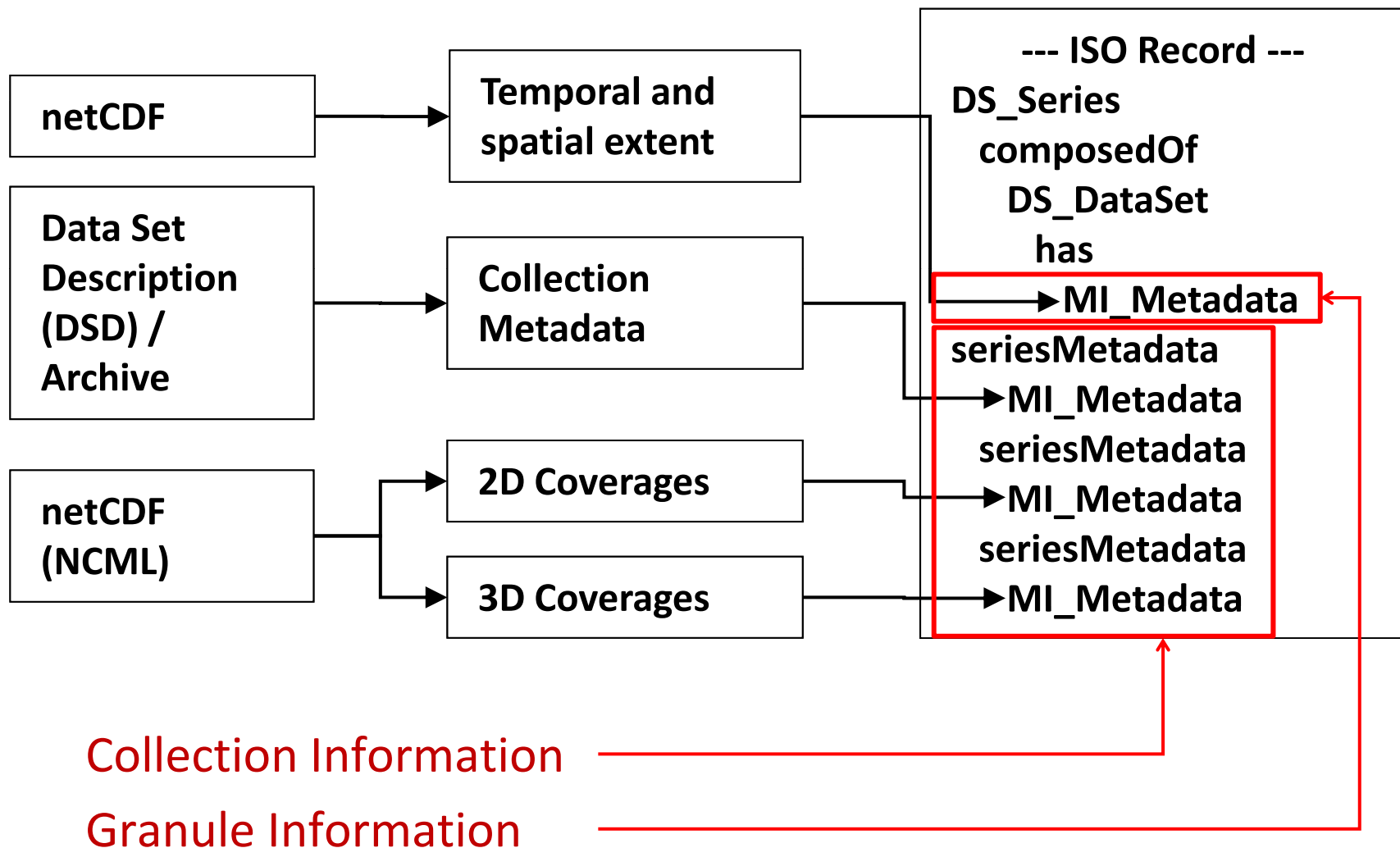
Age Of Most Recent Observation      dataQuality 5  
Number of Observations      dataQuality 6  
Class 1 Coverage      dataQuality 7  
Reliability      dataQuality 8

# How Many ContentInfo Objects?



Minimum: one for each set of flags + one for each quality coverage

# Combining Collection and Granule Information



# Questions

1. How to handle variables with names and standard CF-Names.
2. The rangeElementDescription/rangeElement has a Record type. Is this because it can actually be any type?
3. Need ids in NcML and ddx descriptions.